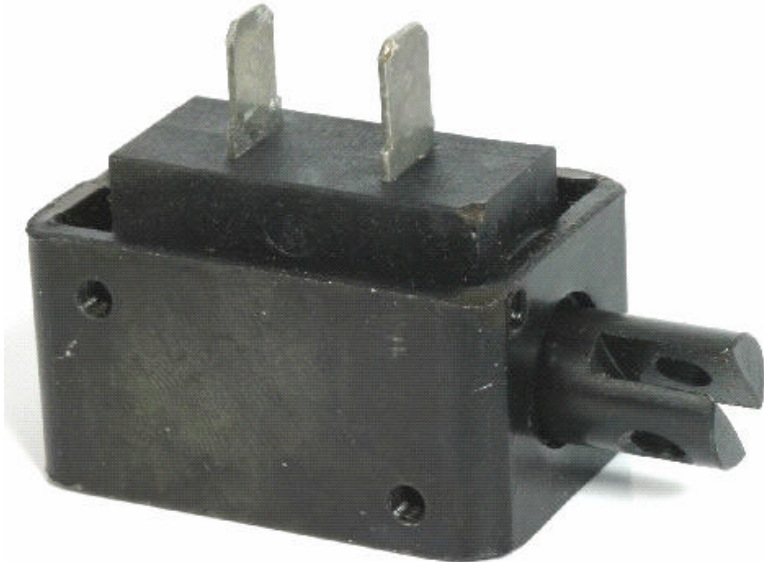


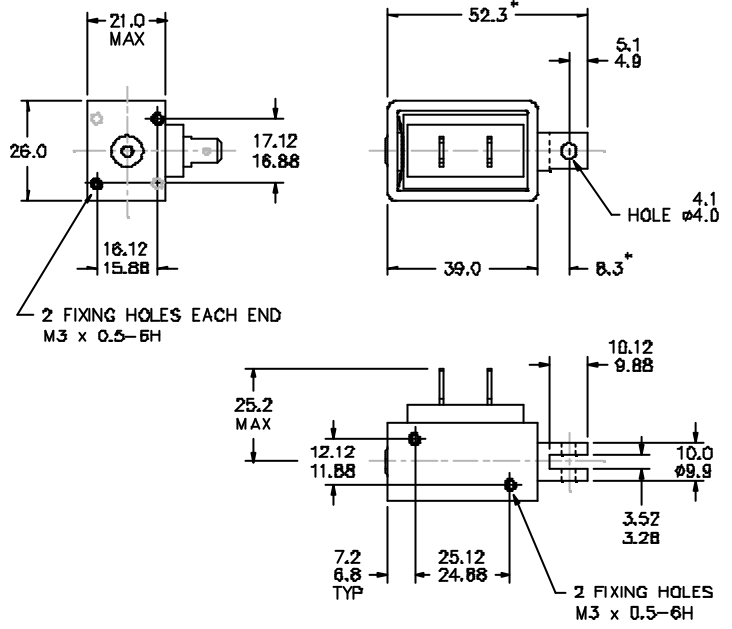
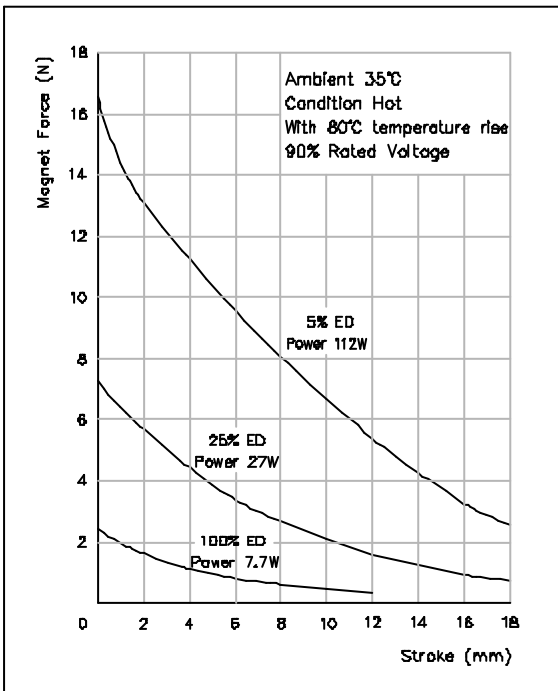
D-Frame Solenoid (Model D3)

MD1039



- Optional Thrust or Pull Type
- Customised Plunger Ends
- Flying Leads or Tags
- Optional Voltage Ratings
- Optional Connectors
- Customised Fixing Holes
- Optional Return Spring
- Alternative Plating Finishes
- Optional Anti-Impact Washer
- Optional Threaded End Stop

If plunger works with gravity:
stroke force = magnet force + plunger weight force.
If plunger works against gravity:
stroke force = magnet force - plunger weight force.



Mechtronics Limited
 South Church Enterprise Park, Bishop Auckland
 Co. Durham. DL14 6XF England
 Tel: + 44 (0)1388 771200
 Fax: + 44 (0)1388 772490
 Email: enquiries@mechetronics.co.uk
 Web: www.mechetronics.com

