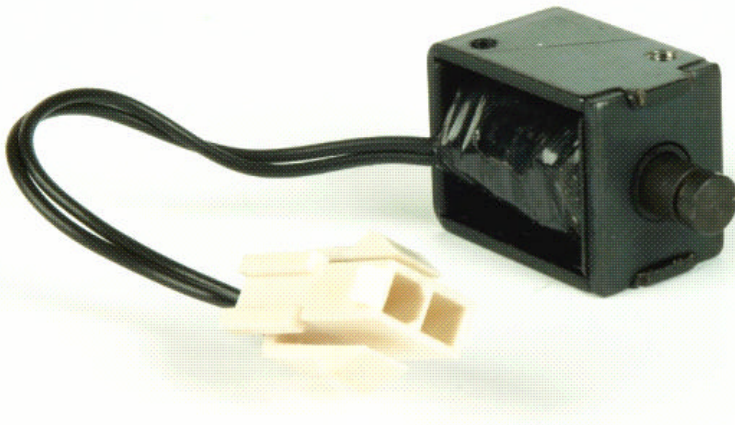


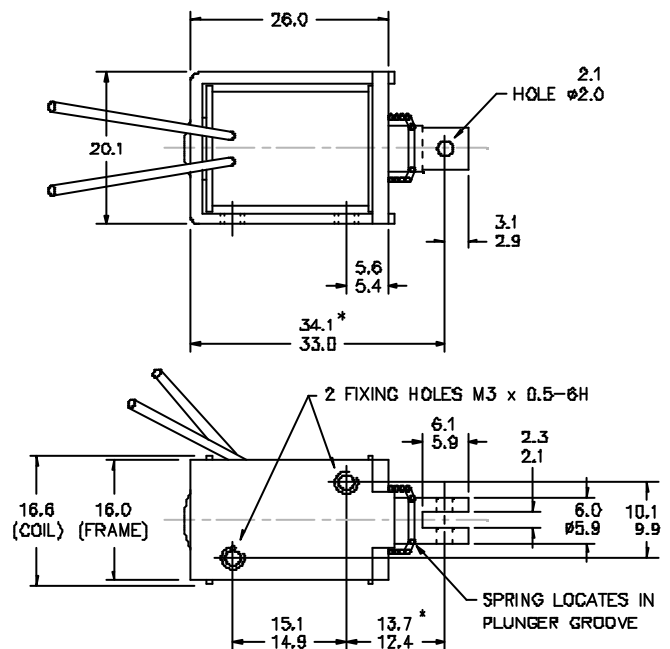
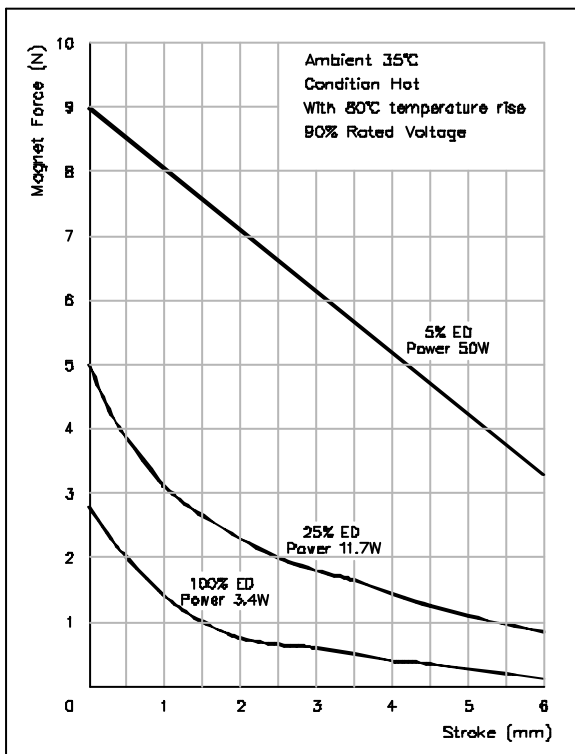
D-Frame Solenoid

MD0626

- Optional Thrust or Pull Type
- Customised Plunger Ends
- Flying Leads with Optional Connectors
- Optional Voltage Ratings
- Optional Tagged & Encapsulated Coils
- Customised Fixing Holes
- Optional Return Spring
- Alternative Plating Finishes
- Optional Anti-Impact Washer



If plunger works with gravity:
stroke force = magnet force + plunger weight force.
If plunger works against gravity:
stroke force = magnet force - plunger weight force.



* DIMENSIONS WITH SOLENOID ENERGISED. TOLERANCES (UNLESS STATED) ±0.4mm.

Mechetronics Limited
South Church Enterprise Park, Bishop Auckland
Co. Durham. DL14 6XF England
Tel: + 44 (0)1388 771200
Fax: + 44 (0)1388 772490
Email: enquiries@mechetronics.co.uk
Web: www.mechetronics.com

MECHETRONICS
GLOBAL FORCE - LOCAL IMPACT