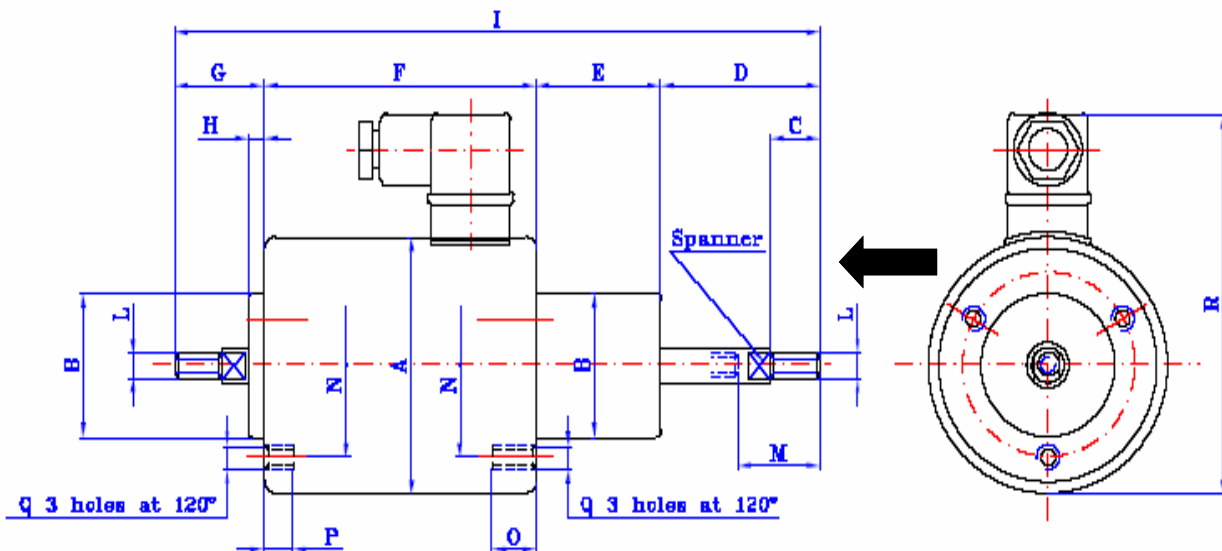


Tubular Solenoid (Model CS100)

GT49111



- Pull & Thrust Type
- DIN 43650 Connector
- Return spring available
- Bearing mounted
- Potted version available
- Bellows and feet available
- 30mm Stroke at 180°C
- 100% ED Rated 50N 53W
- 25% ED Rated 130N 212W
- 5% ED Rated 320N 1060W



Dimensions (mm)

A	B	C	D	E	F	G	H
Ø100	Ø60	20	62	44	111	47	15
I	L	M	N	O	P	Q	R
263	M10	30	Ø76	13	13	M6	140