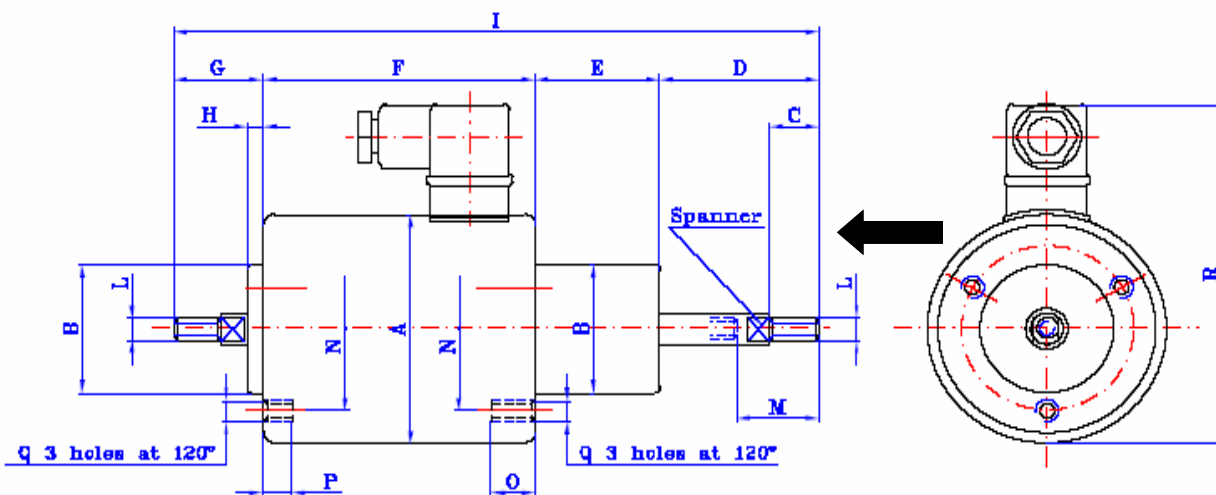


Tubular Solenoid (Model CS80)

GT34102



- Pull & Thrust Type
- DIN 43650 Connector
- Return spring available
- Bearing mounted
- Potted version available
- Bellows and feet available
- 30mm Stroke at 180°C
- 100% ED Rated 35N 37W
- 25% ED Rated 80N 148W
- 5% ED Rated 165N 740W



Dimensions (mm)

A	B	C	D	E	F	G	H
Ø80	Ø44	15	51	43	102	23	2
I	L	M	N	O	P	Q	R
218	M8	30	Ø62	11	11	M6	120