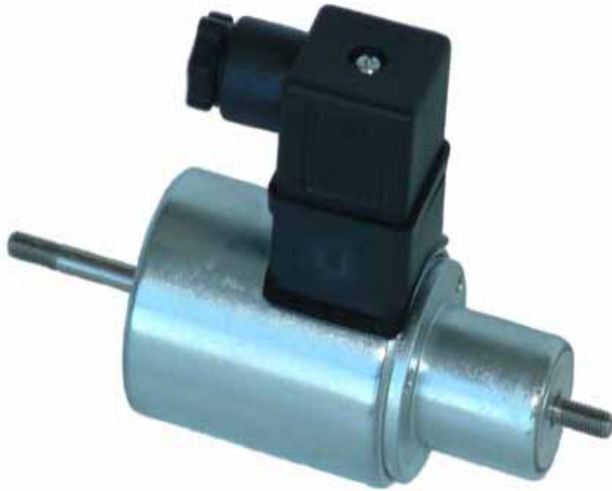
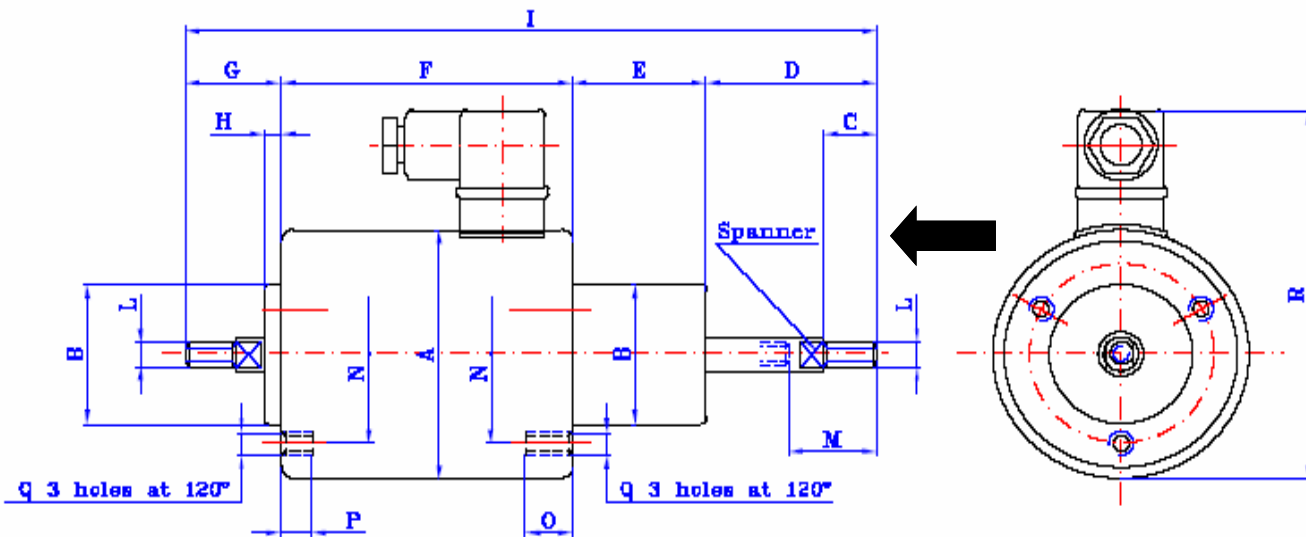


Tubular Solenoid (Model CS45)

GT1958



- Pull & Thrust Type
- DIN 43650 Connector
- Return spring available
- Bearing mounted
- Potted version available
- Bellows and feet available
- 20mm Stroke at 180°C
- 100% ED Rated 9N 29W
- 25% ED Rated 24N 116W
- 5% ED Rated 51N 580W



Dimensions (mm)

A	B	C	D	E	F	G	H
Ø45	Ø25	10	32	26	58	13	1
I	L	M	N	O	P	Q	R
129	M5	20	Ø34	8	5	M4	85