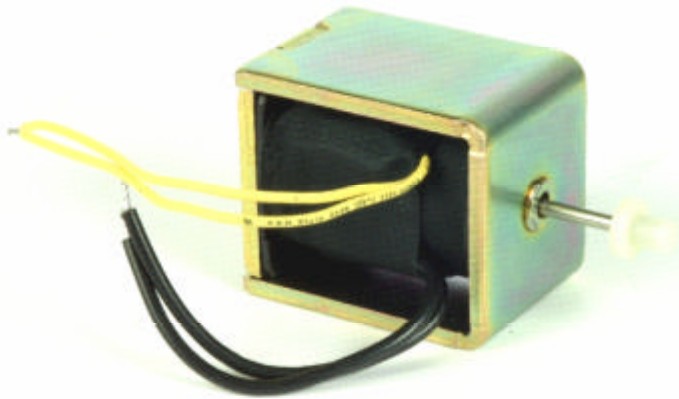


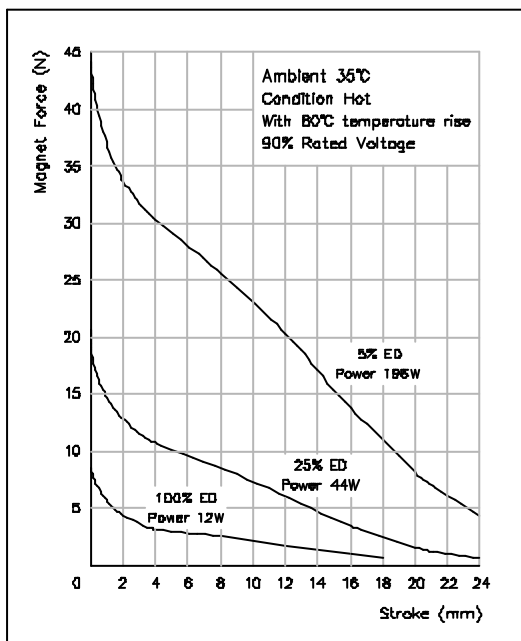
D-Frame Solenoid

GD1444

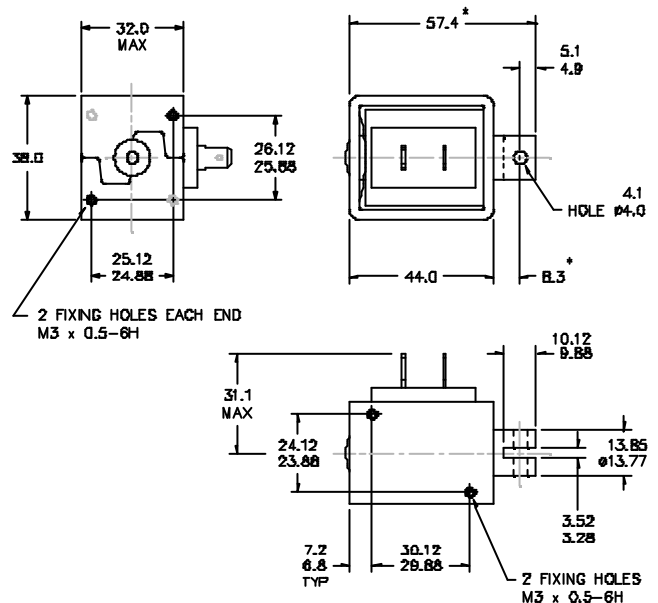


If plunger works with gravity:
stroke force = magnet force + plunger weight force.

If plunger works against gravity:
stroke force = magnet force - plunger weight force.



- Pull Type
- Thrust Type
- Flying Leads
- Terminals
- Zinc Plated Frame
- Nickel Plated Plunger
- Customised Plunger Ends
- Customised Fixings
- Optional Voltages
- AC Option Available



* DIMENSIONS WITH SOLENOID ENERGISED.
TOLERANCES (UNLESS STATED) $\pm 0.4\text{mm}$